

1 Teaching

Quality first teaching supported by evidence informed CPD for teachers and support staff.

Facilitation of 4 x Y6 classes – 14 pupils per class in addition to HLTA support and apprentice.

Facilitation of 3 x Y5 classes – 16 per class in addition to HLTA support and apprentice.

Whole class reading approach and targeted daily readers, reading incentives, regular assessment points.

Writing – taught through dedicated curriculum linked texts.

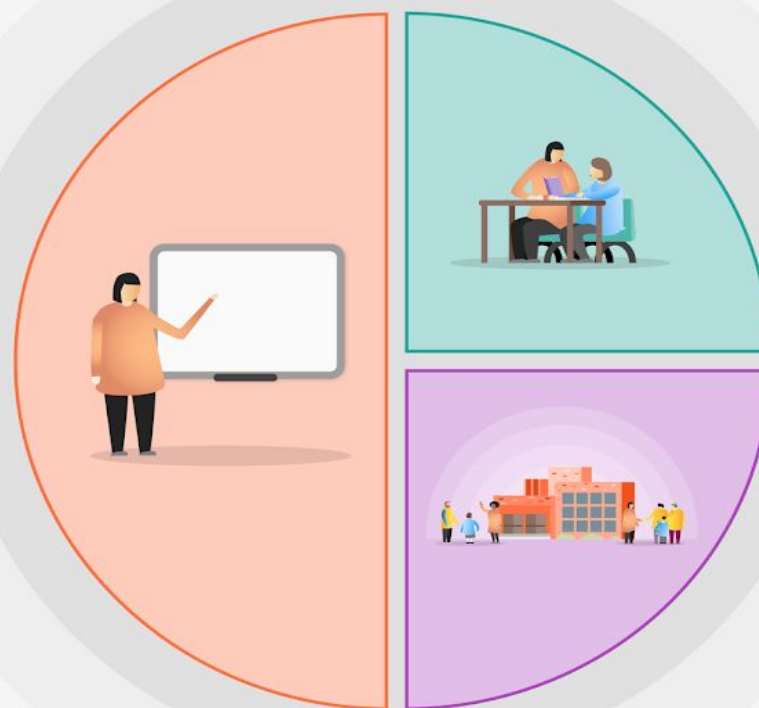
Development of a maths mastery approach, Early Bird Mathematics.

Discrete focuses throughout the wider curriculum to enhance and accelerate progress.

Costings: £15,600.00

Assessment of Impact:

- Pupil Progress / Attainment meetings -data accelerated
- Pupil and Parental surveys
- Staff surveys
- Performance in national testing improved
- Intervention evaluations increased to positive impact
- Attendance improvement
- Increased love of reading
- Improved engagement through internal QA
- Gap continues to be closed across all vulnerable groups.



2 Targeted academic support

Same day intervention in class – for mathematics and literacy.

Intervention led group activities daily to target need

Targeted daily readers and writers.

Targeted daily wider interventions in class bubbles

Costings:£3,000.00

3 Wider strategies

Family Liaison FTE support throughout the calendar year.

Patrol team support within school and community.

Targeted social and emotional support pastoral team

Daily breakfasts in classrooms for all.

Wider curriculum based upon a bespoke BPA approach.

School staff utilised at all opportunities rather than supply.

Costings: £3,000.00

Total Costings: £21,600.00